

Industrial Indicators of the Buenos Aires Province

This report presents the results for the month of
January 2011.

March 15, 2011

Summary

In January, eight of the fourteen activities included in the Industrial Indicators of the Buenos Aires Province¹ showed year-over-year (Y/Y) increases in their levels of production. The highest increases were: Manufacture of family cars and minivans, Production of cement and Production and processing of poultry which increased 83.0%, 20.5% y 16.3%, respectively.

Considering the variation of January 2011 from the previous month (December 2010), were six activities that increased their production: Grinding wheat (37.6%), Manufacture of refined petroleum (9.3%), Production of beer, malt liquors and malt (7.0%), Production of cigarettes and tobacco products n.e.c.² (5.1%), Production of cookies and cakes (4.8%) and Edition of newspapers, magazines and periodicals publications (3.8%).

The following tables show the monthly, year-over-year and accumulated variation of the selected activities.

Table 1

Variation of selected activities January 2011

Activity	Variation		
	Monthly	Y/Y	Accumulated
Production and processing of poultry	▼	▲	▲
Production of cold cuts
Production of milk and dried milk products	▼	▼	▼
Grinding wheat	▲	▲	▲
Production of cookies and cakes	▲	▲	▲
Production of beer, malt liquors and malt	▲	▲	▲
Production of cigarettes and tobacco products n.e.c.	▲	▲	▲
Edition of newspapers, magazines and periodicals publications	▲	▼	▼
Manufacture of refined petroleum	▲	▼	▼
Production of cement	▼	▲	▲
Manufacture of basic iron and steel	=	▲	▲
Manufacture of family cars and minivans	▼	▲	▲
Manufacture of pickup trucks	▼	▼	▼
Manufacture of passenger and freight transport vehicles	▼	▼	▼

Notes:

Provisional data.

... indicates data not available at the time of presentation of the results.

Source: Dirección Provincial de Estadística (DPE).

¹The industrial indicators of the Buenos Aires Province are monthly calculated by the team of the *Dirección de Estadísticas Económicas* composed by Veronica Teilletchea (principal analyst) and Manuel Vargas (data collection).

²Not elsewhere classified.

Table 2
Activities grouped according to their Y/Y variation and accumulated variation
January 2011

Accumulated variations (January-January)		
Sign	+	-
Y/Y variations (January)	+ Production and processing of poultry Grinding wheat Production of cookies and cakes Production of beer, malt liquors and malt Production of cigarettes and tobacco products n.e.c. Production of cement Manufacture of basic iron and steel Manufacture of family cars and minivans	- Production of milk and dried milk products Edition of newspapers, magazines and periodicals publications Manufacture of refined petroleum Manufacture of pickup trucks Manufacture of passenger and freight transport vehicles

Note: Provisional data.

Source: Dirección Provincial de Estadística (DPE).

Variation of the Industry in January 2011 for selected activities

This report show the performance of 12 activities, divided into 14 series that include: Production and processing of poultry; Production of cold cuts; Production of milk and dried milk products; Grinding wheat; Production of cookies and cakes; Production of beer, malt liquors and malt; Production of cigarettes and tobacco products n.e.c.; Edition of newspapers, magazines and periodicals publications; Manufacture of refined petroleum; Production of cement; Manufacture of basic iron and steel; Manufacture of family cars and minivans; Manufacture of pickup trucks³ and Manufacture of passenger and freight transport vehicles.

Table 3 shows percentage variations (monthly, year-over-year, and accumulated) of the selected series for January 2011.

Table 3
Percentage variations
January 2011

Clanae Cosde 1997	Activity	Percentage Variations		
		Monthly	Y/Y	Accumulated to December 2010 inter-annual
15112	Production and processing of poultry	-1.9	16.3	16.3
15113	Production of cold cuts
15201	Production of milk and dried milk products	-10.9	-5.9	-5.9
15311	Grinding wheat	37.6	12.8	12.8
15411	Production of cookies and cakes	4.8	4.7	4.7
15530	Production of beer, malt liquors and malt	7.0	13.4	13.4
16009	Production of cigarettes and tobacco products n.e.c.	5.1	11.1	11.1
22120	Edition of newspapers, magazines and periodicals publications	3.8	-3.8	-3.8
23200	Manufacture of refined petroleum	9.3	-1.7	-1.7
26941	Production of cement	-7.5	20.5	20.5
27100	Manufacture of basic iron and steel	0.0	13.3	13.3
34100	Manufacture of Automobiles			
	Family cars and minivans	-45.9	83.0	83.0
	Pickup trucks	-69.6	-9.7	-9.7
	Passenger and freight transport vehicles	-91.0	-55.7	-55.7

Notes:

Provisional data.

... indicates data not available at the time of presentation of the results.

Regarding reductions in automotive series (family cars and minivans, pick up trucks, passenger and freight transport vehicles), it should be noted that they related with production reductions due to holidays, that generally occur each year in January.

Source: Dirección Provincial de Estadística (DPE).

³ This category also includes some models of family cars whose interior are adapted to carry some cargo.

Table 4 shows the evolution of the selected series (in index values) for the period 2003 - January 2011.

Table 4
Annual and Monthly Indexes
Base year 1999=100

Period	Production and processing of poultry	Production of cold cuts	Production of milk and dried milk products	Grinding wheat	Production of cookies and cakes	Production of beer, malt liquors and malt	Production of cigarettes and tobacco products n.e.c.
2003	74.99	68.98	79.44	96.79	107.11	102.12	87.26
2004	90.97	81.99	90.82	97.22	123.45	103.09	83.16
2005	115.37	86.25	103.18	88.92	154.90	104.62	75.30
2006	132.25	92.88	109.88	88.61	169.16	106.64	86.40
2007	140.63	110.36	116.93	98.01	201.57	113.86	88.31
2008	149.13	115.84	116.96	101.84	172.63	121.50	95.18
2009	163.27	118.74	115.54	98.03	193.05	123.31	99.31
2008							
jan-08	154.33	153.45	120.04	102.65	149.91	158.09	96.60
feb-08	148.47	119.78	113.82	101.23	172.47	142.38	92.16
mar-08	137.48	56.81	106.36	90.59	165.34	129.53	90.80
apr-08	153.15	129.95	125.73	96.73	199.87	107.86	97.67
may-08	149.85	115.56	128.60	115.57	121.96	107.03	92.42
jun-08	143.77	82.96	107.71	93.83	125.68	78.10	85.72
jul-08	150.51	125.24	127.76	114.12	200.54	85.01	95.45
aug-08	133.20	117.09	122.55	120.42	206.40	100.05	90.38
sep-08	149.48	119.79	112.35	111.79	215.37	114.17	101.41
oct-08	159.02	110.80	117.93	108.69	213.94	140.78	101.72
nov-08	143.32	106.92	109.25	95.32	183.72	139.55	99.96
dic-08	167.05	151.77	111.38	71.10	116.39	155.39	97.81
2009							
jan-09	153.47	127.00	106.81	94.77	157.66	170.80	91.54
feb-09	144.29	97.50	107.10	93.17	164.31	144.08	93.85
mar-09	156.66	117.79	120.35	98.95	199.56	129.26	98.37
apr-09	154.64	127.42	111.40	100.86	199.48	112.51	89.19
may-09	153.98	109.24	116.51	102.02	191.44	108.73	85.26
jun-09	166.38	111.59	119.46	104.01	211.04	89.64	92.29
jul-09	169.75	112.33	120.84	108.98	206.62	83.27	91.09
aug-09	158.10	129.21	118.60	108.96	207.64	88.10	104.30
sep-09	172.28	123.75	119.72	109.77	208.82	126.93	115.92
oct-09	169.93	125.74	117.48	93.31	214.74	141.22	113.63
nov-09	172.70	117.73	112.08	83.09	205.21	140.14	119.78
dic-09	187.08	125.61	116.19	78.51	150.14	145.03	96.51
2010							
jan-10	163.20	130.95	109.00	91.76	157.81	164.44	106.76
feb-10	161.22	124.09	108.30	97.30	171.27	142.84	105.38
mar-10	179.28	113.23	119.23	90.98	227.76	138.62	123.69
apr-10	172.71	129.15	118.54	92.69	167.63	120.69	109.72
may-10	158.19	109.58	120.52	97.61	186.34	99.74	97.79
jun-10	176.87	123.60	121.72	111.41	223.46	84.11	98.64
jul-10	173.42	122.35	125.05	107.67	224.46	101.24	109.43
aug-10	177.91	125.11	119.66	113.09	243.00	109.16	106.36
sep-10	183.90	120.84	118.01	111.14	244.69	123.62	112.60
oct-10	166.77	113.69	117.43	97.59	220.42	146.49	101.85
nov-10	182.24	...	118.48	115.83	202.66	149.01	118.23
dic-10	193.31	...	115.06	75.22	157.62	174.30	112.85
2011							
jan-11	189.73	...	102.57	103.54	165.22	186.43	118.62

Continue...

Table 4

Annual and Monthly Indexes
Base year 1999=100

Period	Edition of newspapers, magazines and periodicals publications	Manufacture of refined petroleum	Production of cement	Manufacture of basic iron and steel	Manufacture of Automobiles		
					Family, minivans	Pickup trucks	Passen. freight transport
2003	228.45	92.52	83.41	121.13	59.30	85.75	72.72
2004	233.02	94.57	97.57	120.62	108.31	116.15	130.77
2005	234.24	93.13	122.22	133.45	115.32	188.92	167.44
2006	233.93	98.69	142.92	126.81	175.64	234.83	191.13
2007	229.59	103.78	160.85	130.65	214.58	253.52	254.14
2008	228.59	100.21	167.78	129.99	231.86	244.62	319.06
2009	223.09	93.96	151.03	102.81	181.89	198.85	126.02
2008							
jan-08	231.09	104.76	177.08	137.18	173.36	131.68	99.56
feb-08	232.97	94.72	164.43	131.74	162.28	237.52	295.20
mar-08	234.99	101.07	152.12	146.30	225.20	276.79	328.77
apr-08	231.37	96.40	175.48	143.34	256.87	233.95	372.76
may-08	230.65	107.48	170.14	139.59	263.55	272.58	378.31
jun-08	228.68	95.77	143.89	139.53	248.21	241.57	368.59
jul-08	225.04	97.18	174.77	147.81	248.33	298.16	395.33
aug-08	227.65	102.36	171.53	147.15	246.09	274.97	379.24
sep-08	223.22	101.20	188.27	149.63	269.50	299.51	408.76
oct-08	220.85	105.42	167.84	114.58	310.22	267.19	386.76
nov-08	229.20	96.09	176.28	79.04	236.45	231.27	343.93
dic-08	227.36	100.11	151.48	83.95	142.23	170.19	71.54
2009							
jan-09	230.74	94.70	148.27	88.17	47.47	76.06	4.75
feb-09	224.20	83.50	129.58	82.49	40.36	170.38	98.98
mar-09	228.77	101.00	138.77	93.37	160.23	191.36	105.92
apr-09	222.26	96.21	144.08	86.11	175.38	181.29	59.15
may-09	226.98	97.87	148.10	91.91	205.28	163.19	114.49
jun-09	219.39	97.09	150.91	90.22	195.89	170.44	122.82
jul-09	222.54	94.74	148.70	110.65	191.56	198.30	127.46
aug-09	222.81	94.99	171.76	115.48	212.54	212.60	112.75
sep-09	216.37	84.97	146.65	111.43	245.29	264.65	135.44
oct-09	216.97	82.57	171.15	128.48	245.74	264.97	273.43
nov-09	223.32	98.81	163.23	115.48	249.24	259.01	182.56
dic-09	222.79	101.05	151.16	119.94	213.75	233.93	174.45
2010							
jan-10	227.62	100.62	135.86	128.16	69.01	126.38	36.58
feb-10	223.61	91.40	133.16	105.24	176.24	237.48	124.10
mar-10	214.27	103.51	166.69	126.24	236.16	279.13	180.47
apr-10	211.92	98.76	164.11	113.49	225.84	305.53	181.17
may-10	215.27	100.97	163.95	130.89	218.31	313.60	136.37
jun-10	202.61	95.62	159.43	108.53	250.72	338.61	196.91
jul-10	202.75	99.80	170.48	114.72	237.14	275.18	174.57
aug-10	206.94	106.29	171.91	145.68	283.17	412.13	148.87
sep-10	204.09	100.25	166.91	133.98	282.11	393.37	201.89
oct-10	209.72	92.81	173.28	142.47	257.90	374.50	149.57
nov-10	205.78	99.59	178.36	135.71	281.97	416.72	194.13
dic-10	211.00	90.50	177.01	145.22	233.38	375.29	180.94
2011							
jan-11	218.96	98.92	163.78	145.23	126.29	114.14	16.21

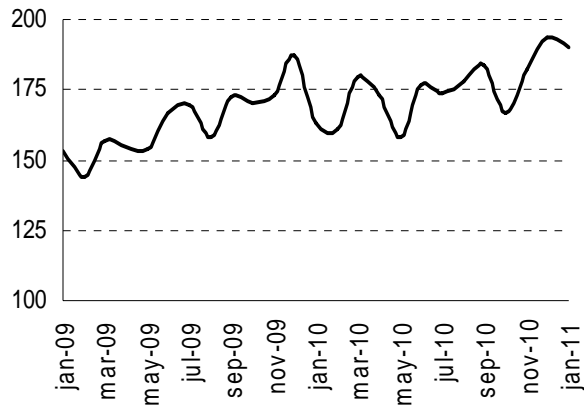
Notes:

Provisional data.

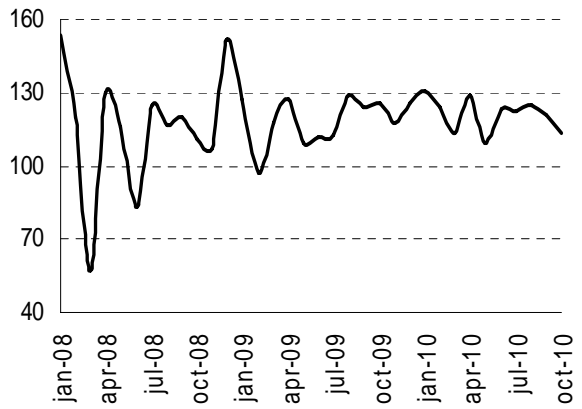
... indicates data not available at the time of presentation of the results.

Source: Dirección Provincial de Estadística (DPE).

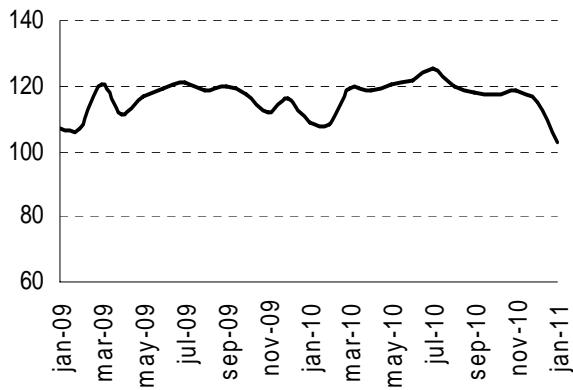
Production and processing of poultry



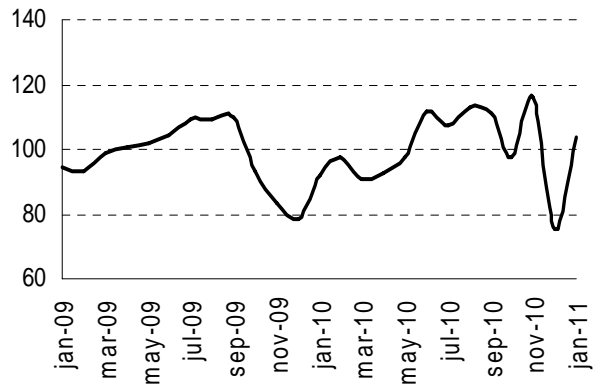
Production of cold cuts



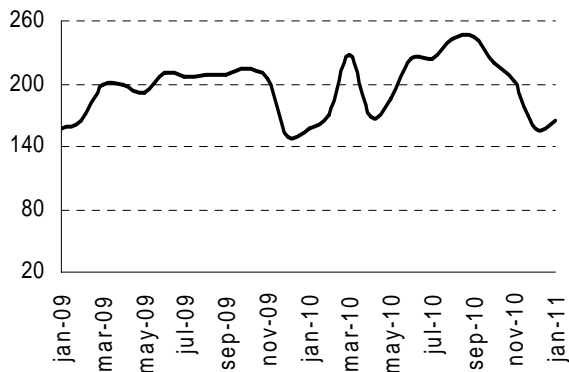
Production of milk and dried milk products



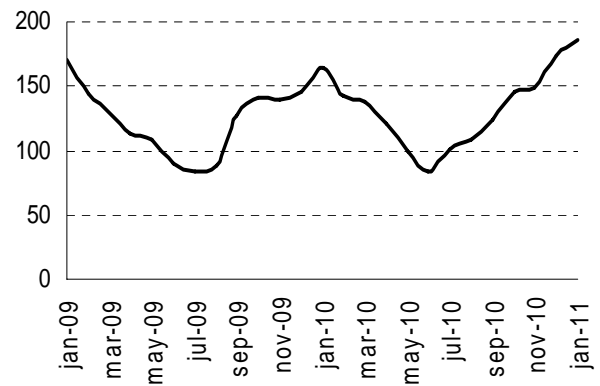
Grinding wheat



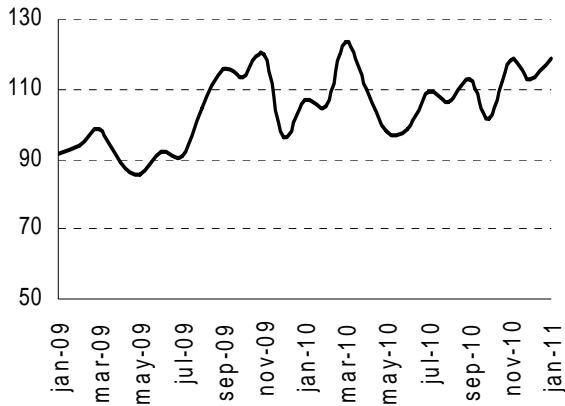
Production of cookies and cakes



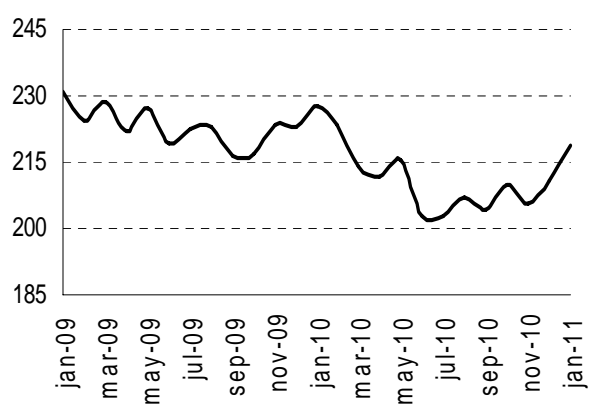
Production of beer, malt liquors and malt



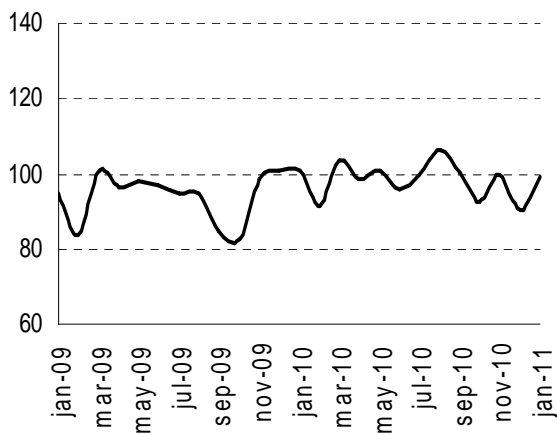
Production of cigarettes and tobacco products previously unclassified



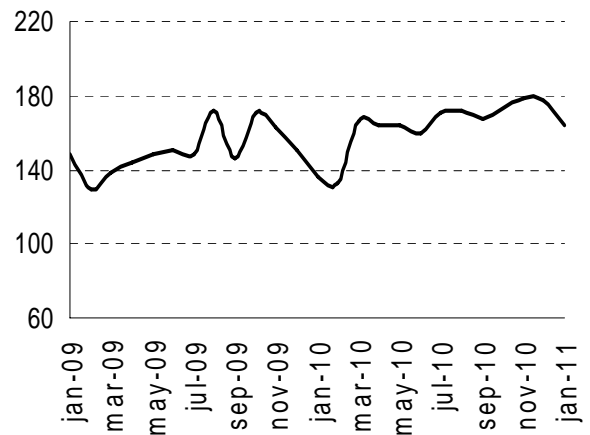
Edition of newspapers, magazines and periodicals publications



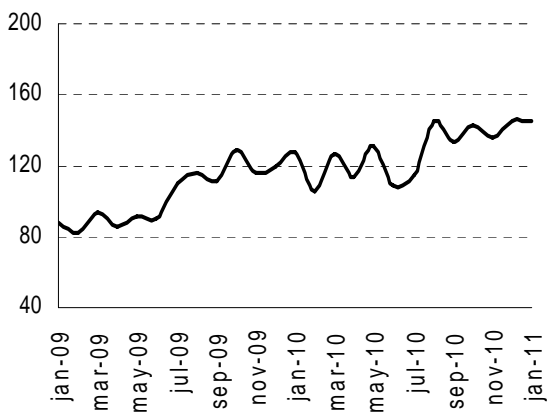
Manufacture of refined petroleum



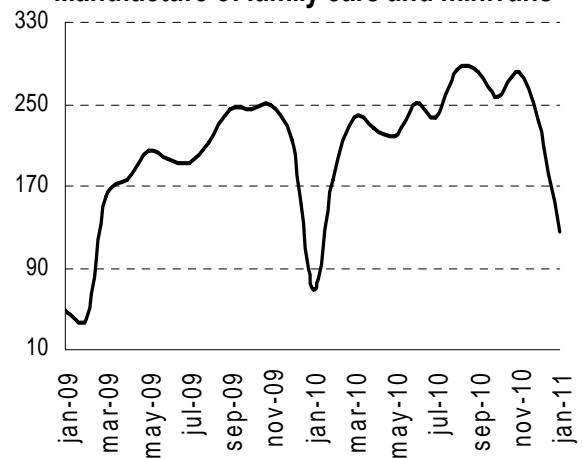
Production of cement



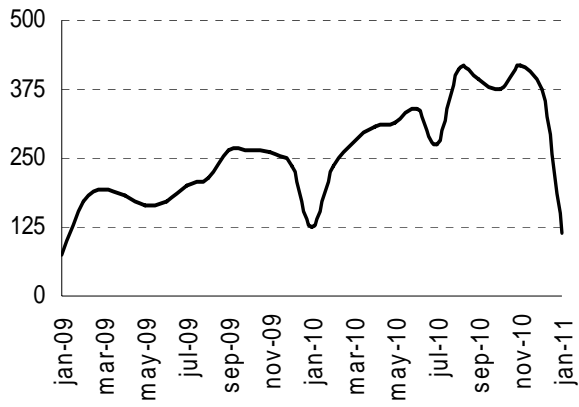
Manufacture of basic iron and steel



Manufacture of family cars and minivans



Manufacture of pickup trucks



Manufacture of passenger and freight transport vehicles

